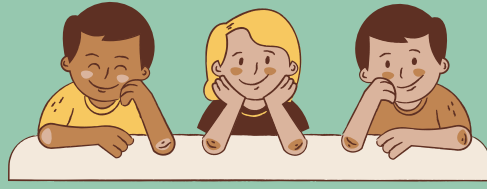


Test-to-Stay Program



An easy guide to Bay County's Test-to-Stay Program at schools.

Choosing to Test

Not Choosing to Test

Unvaccinated

Close contact at school
Symptom-free

Return to school:
Day after exposure
Test on days 1-5, 7 & 9

Unvaccinated

Close contact at school
Symptom-free

Return to school:
After 10 days of quarantine
post exposure



Unvaccinated

Close contact to a
confirmed case at home.
Symptom-free

Return to school:
Day after the most recent
household case finishes
their isolation period.
Test on days 1-5, 7 & 9

Unvaccinated

Close contact to a
confirmed case at home.
Symptom-free

Return to school:
10 days after the most
recent household case
finishes their isolation
period.



Vaccinated

Close contact at school
Symptom-free

Return to school:
Immediately
Must wear mask and test 5
days after most recent
exposure

Vaccinated

Close contact at school
Symptom-free

Return to school:
Immediately
Must wear mask for 10 days
after most recent exposure



Vaccinated

Close contact to a
confirmed case at home.
Symptom-free

Return to school:
Immediately
Must wear mask and test 5
days after isolation end
date for most recent
household case.

Vaccinated

Close contact to a
confirmed case at home.
Symptom-free

Return to school:
Immediately
Must wear mask for 10 days
after isolation end date for
most recent household
case.



Additional Information:



www.baycounty-mi.gov/Health/COVID19/Test-to-Stay-Program.aspx