



# Bay County Dashboard

## *Green Initiatives*





# Bay County Dashboard

## *Green Initiatives*

### Current Examples of Bay County Green Initiatives & Programs

- |   |  |
|---|--|
| • Phragmites Treatment                          | • Dispose My MEDS Program  |
| • Recycling Website                             | • Energy Star Program  |
| • Saginaw Bay Coastal Initiative                | • Phosphorus Ban Information   |
| • Saginaw Bay Blueways Trail                    | • Neighborhood Cleanup Days & Scrape Tire Drive                      |
| • PACE (Property Assessed Clean Energy) Program | • GLBR Energy Efficiency, Conservation and Renewable Energy Strategy |
| • Lakefront & Beach Study Report                | • Great Lakes Clean Water Organization                               |
| • Michigan Clean Sweep Program                  | • Beach Wellness   |
| • Michigan Green Schools                        | • Bay County Solid Waste Management Plan                             |
| • Gypsy Moth Suppression Program                | • Michigan Water Stewardship Program                                 |
| • Saginaw Bay Watershed Initiative Network      |  |



# Bay County Dashboard

## Green Initiatives

### Descriptions of Bay County Green Initiatives & Programs



#### **Invasive Phragmites Management**

• Invasive Phragmites Management projects follow recommendations in the Guide to Phragmites Control published by the Michigan Department of Natural Resources (MDNR). Control efforts include both chemical and mechanical treatments to control Phragmites. The first step in managing Phragmites is to access and map where large monoculture stands of Phragmites are present. Treatment is generally undertaken during late summer to early fall since Phragmites, like trees, moves nutrients into their roots during fall to fuel the plant's growth the following spring. This is the best time to get the pesticides to the roots to kill them since the plant can't tell the difference between nutrients and pesticides. The best time of year to mow and burn Phragmites is during the winter when ice has formed around the dead stalks. Burning can be done any time during the winter but property owners must get a burn permit from their local unit of government, usually the township office or Fire Department. Property owners also need to notify the local Michigan Department of Natural Resources (MDNR) and Department of Environment, Great Lakes and Energy (EGLE) offices a few days before burning since this is being done on the Saginaw Bay.

• If you would like to control Phragmites on your property this may require one or more permits from local, state, and federal authorities as several environmental laws may be applicable. For more information, please contact the Bay County Environmental Affairs Office at (989) 895-4135. For state permit information contact the Land & Water Management Division of the Michigan Department of Environment, Great Lakes and Energy- Environmental Assistance Center at 1-800-662-9278 or [eac@michigan.gov](mailto:eac@michigan.gov).

• Several areas along the Saginaw Bay shoreline were treated once during the fall in 2013 through 2019. Initial treatments were done by Hamilton Helicopter Service using a mixture of aquatic formulation herbicides containing Glyphosate and Imazapyr. These projects were funded through a US Fish and Wildlife Service (USFWS) Habitat Restoration Grant and the Michigan Invasive Species Grant Program (MISGP). Areas treated under the USFWS grant requires land owners to continue control and management efforts for 8 years after the initial funded treatments were completed in 2016 and 2017. For the MISGP Project large areas were chemically treated in 2016 and 2017. In 2017 many of the areas were also mowed to reduce the standing dead stacks of Phragmites. Ongoing treatments of these and other near shore areas along the Saginaw Bay continue as funding allows. More information can be found at [Click here for more information](#).



# Bay County Dashboard

## Green Initiatives

More detailed information on Green Initiatives can be found on [Bay County's Environmental Affairs](#) webpage.



### Recycling in Bay County

- Recycling is one of the best ways to have a positive impact on our community. It is a significant step in reducing the amount of garbage that ends up in our landfills and helps make our environment a cleaner place to live. Other important benefits of recycling include saving trees and forests, conserving raw materials, protecting wildlife habitat, saving energy, and preserving landfill space. It's important to reduce, reuse, and recycle when we can. For more information about programs and locations that provide recycling in Bay County, please click [HERE](#).



### Saginaw Bay Coastal Initiative

- The Saginaw Bay Coastal Initiative (SBCI) is a collaboration of interested individuals, businesses, and local governments in the bay front communities of: Arenac, Bay, Huron, Iosco, Midland, Saginaw, and Tuscola working with state and federal agencies for actions to improve the Saginaw Bay. [Click here for more information.](#)



### Saginaw Bay Blueways Trail

- The Saginaw Bay is the unique feature defining Michigan's mitten and is easily seen and recognized on satellite photos of the Earth. Come see what it looks like up close along the coastal Blueways trail. White sandy beach shorelines small cottages and big houses are interspersed by large natural coastal marsh areas and provide the full variety of a coastal paddling experience. [Click here for more information.](#)





# Bay County Dashboard

## Green Initiatives

More detailed information on Green Initiatives can be found on [Bay County's Environmental Affairs](#) webpage.



### Lake Huron Lakewide Action Management Plan

With its land and waterscapes evolving through the interacting forces of water, geology and climate, Lake Huron and its watershed have been shaped into an area of global ecological significance. Lake Huron is renowned for its beaches, dunes, rugged shorelines, coastal wetlands, diverse river systems, forests and more than 30,000 islands. Conserving this precious resource is important to maintaining its enormous social, recreational and economic benefits. [Click here to view the 2017 Annual Plan.](#)



### Saginaw Bay Watershed Initiative Network

In 2016, WIN continued to support programs that gave thought to how their actions would make an impact through that lens of sustainability. We invested in efforts that built connections – literally and figuratively – across the region. For example, “water trails” were simply not on our regional agenda 20 years ago. But today, opportunities to connect our communities by the waterways that run between them abound. And in this report you’ll read about one such project along the Shiawassee River that is even seeking a national water trail designation. We also supported “green infrastructure” in Flint as an important alternative to “gray infrastructure,” and continued our focus on providing opportunities for people to have meaningful interactions with the environment at various sites across the region. Beyond that, we provided investments in wildlife habitat improvement and unique programs that focus on human habitat, especially in our urban areas like Saginaw, where we are supporting a local land conservancy. You’ll read about some of these projects, and more, in this year’s report. [Click here to view the 2017 Annual Report.](#)



# Bay County Dashboard

## Green Initiatives



### Energy Star

- ENERGY STAR is a U.S. Environmental Protection Agency (EPA) voluntary program that helps businesses and individuals save money and protect our climate through superior energy efficiency. The ENERGY STAR program was established by EPA in 1992, under the authority of the Clean Air Act Section 103(g). [Click here for more information.](#)



### Phosphorus Ban Information

- The Bay County Board of Commissioners approved the ordinance to ban lawn fertilizers containing phosphorus in Bay County on November 13, 2007. The Phosphorus Ban was enacted to reduce the amount of phosphorus found in the Saginaw Bay in order to reduce the algae growth. [Click here for more information.](#)



### Neighborhood Cleanup Days & Scrap Tire Drive

- Various municipalities typically host a spring or fall cleanup day, which most often includes a location for resident to properly dispose of unwanted household items and recyclables. The City of Bay City's neighborhood cleaning usually coincides with the Bay County Health Department annual environmental waste cleanup. The Bay County Mosquito Control also hosts two scrap tire drives throughout the year.



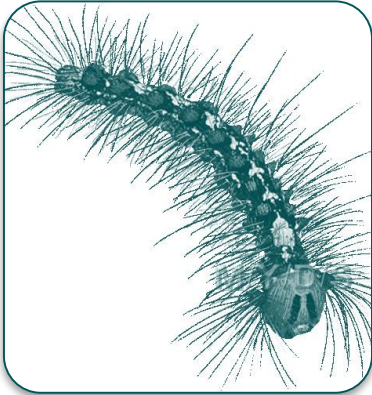
### GLBR Energy Efficiency, Conservation and Renewable Energy Strategy

- The Great Lakes Bay communities have developed this Regional Energy Efficiency, Conservation, and Renewable Energy Strategy (Strategy) to enable our communities to build on these existing efforts, and proactively pursue strategies for reducing traditional energy use in our municipal, residential, commercial, and industrial sectors. The Strategy is a key part of the region's planning efforts, and lays the ground work for prioritizing and collaborating on efforts to: conserve and reduce per capita energy use in the region, improve the energy efficiency of our buildings and transportation infrastructure, and Meet a growing share of our energy demand with alternative energy sources, particularly those produced in the region. [Click here for more information.](#)



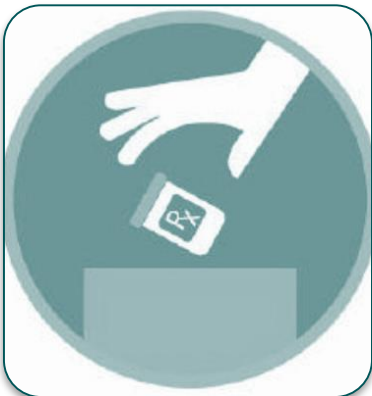
# Bay County Dashboard

## Green Initiatives



### Gypsy Moth Suppression Program

- The purpose of the Gypsy Moth Suppression Program is to protect Bay County's highly valued trees from the damaging effects of Gypsy Moth Caterpillars, Emerald Ash Borer (EAB), and other non-native invasive pests and to educate the public about these pests and what they can do to protect their trees. Services of the program include:
  - Monitoring all wooded, publicly owned lands and residential areas of Bay County for the presence of Gypsy Moth life stages and signs of infestation by EAB and other non-native pests.
  - Conduct suppression/control activities in areas of the county with heavy outbreak level infestations of Gypsy Moths. This includes determining where out-break level populations occur, contracting with an aerial applicator and conducting treatment projects to control feeding Gypsy Moth Caterpillars, and evaluation of treatment results.
  - Contract for treatment of publicly owned ash trees that may become hazardous to the public when they are damaged or killed by EAB infestations. There are over 3,000 ash trees included in treatment efforts. Private pesticide application firms do the treatment which consists of injecting the trees with an insecticide that kills all life stages of the EAB that feed on the tree. This insecticide stays in the tree for up to three years so each individual tree is only treated once every three years.
  - Conduct educational programs for schools, property owners, local civic groups, and local governmental agencies to inform them about the life cycle of the Gypsy Moth and other invasive species. Specifically, how they affect our local ecology and what can be done to control or limit the effects of non-native pests that have or might invade Bay County.
- [Click here for more information.](#)



### Dispose My MEDS Program

#### • REMINDER – DO NOT FLUSH MEDICATION

- Dispose My Meds is an online resource to help you to find medication disposal programs at the local independent community pharmacy near you. More than 100 different pharmaceuticals have been detected in lakes, rivers, reservoirs and streams throughout the world. Pharmaceuticals are being detected in the environment and there is genuine concern that these compounds, in the small concentrations that they're at, could be causing impacts to human health or to aquatic organisms. [Click here for more information.](#)



# Bay County Dashboard

## Green Initiatives

### **Bay County Mosquito Control Integrated Mosquito Management Approach**

- As a division of the Bay County Environmental Affairs and Community Development Department, Bay County Mosquito Control acknowledges the importance of providing mosquito control services without producing adverse impacts on the environment. Our program is grounded in an Integrated Mosquito Management (IMM) approach, using a variety of methods to reduce the risk of disease transmission and the number of nuisance mosquitoes while minimizing environmental risk.
- IMM Proactive Strategies
  - Education - mosquito biology, mosquito breeding/habitats, disease prevention, mosquito prevention through source reduction
  - Mosquito surveillance to guide control measures
  - Mosquito control while minimizing environmental impacts
  - Focus on controlling mosquitoes in the larval stage using biological or naturally-occurring control materials; utilizing chemical treatments only when action thresholds are met and at the lowest rate effective for control
  - Strategies to reduce pollinator risk by incorporating the American Mosquito Control Association's Best Management Practices in Mosquito Control
  - Click here for more information (hyperlink to <http://www.baycountymi.gov/mosquitocontrol/>)







# Bay County Dashboard

## Green Initiatives

<b>Mosquito Control Metrics</b>	<b>2021</b>	<b>2022</b>	<b>2023</b>
<b>TRAPPING DATA</b>			
Female Mosquitoes Collected in Light Traps (attractant: light)	15,560	5,958	12,512
Female Mosquitoes Collected in CDC Traps (attractant: carbon dioxide)	86,272	93,943	80,908
<b>VIRUS SURVEILLANCE – MOSQUITOES</b>			
Mosquito Samples Tested/Individual Female Mosquitoes	524/20,616	1,064/33,903	1,521/57,876
Samples Testing Positive for West Nile Virus (WNV)	3	26	5
Sample Testing Positive for Jamestown Canyon Virus (JCV)	N/A	4	5
Sample Testing Positive for Eastern Equine Encephalitis (EEE)	0	0	2
<b>VIRUS SURVEILLANCE – BIRDS</b>			
Dead Birds Reported by Residents/Birds Tested for WNV	27/5	15/7	9/6
Birds Testing Positive for WNV	0	5	4
<b>MOSQUITO LARVAL HABITAT DATA</b>			
Sites inspected for mosquito larvae	4,991	17,192	9,690
Sites requiring treatment to control larvae	821	2,335	1,702
<b>MDARD TRAINING</b>			
Staff training - permanent and seasonal	29	34	36



# Bay County Dashboard

## Green Initiatives



### **PACE (Property Assessed Clean Energy) Program**

- An innovative way to help Bay County businesses save money, create jobs, grow the tax base and green our state. PACE was created through Act No. 270, Public Acts of Michigan (2010) for the purpose of promoting renewable energy systems and energy efficient improvements for eligible local businesses. The PACE program has identified improvements, renewable energy systems and energy projects within the Bay County PACE district. [Click here for more information.](#)



### **Lakefront & Beach Access Study Report**

- In recognition of the need to improve the park's under-utilized lakeshore area, a team of experts and professionals from the Department of Natural Resources (DNR) and Bay County community representatives spent the past year soliciting public input and evaluating development and recreation opportunities for this area that will enhance day use opportunities at the park. The overarching goal of the Lakefront and Beach Access Study is to increase visitation at the lakeshore, improve public access to the Saginaw Bay, strengthen the relationship between the park and the local community, support the economic vitality of the region, and protect and preserve the natural and cultural features of the park and legal mandates pertaining to the park. [Click here for more information.](#)



### **Michigan Clean Sweep Program**

- Looking for a way to safely dispose of unusable, outdated or unwanted pesticides? There is no charge for properly disposing of these materials through the Michigan Clean Sweep Program. Both pesticides and mercury items are accepted. No fertilizers will be accepted for disposal under the Clean Sweep Program unless they are part of a pesticide formulation. [Click here for more information.](#)



### **Michigan Green Schools Initiative**

- The Michigan Green Schools Initiative is a non-profit 501(c)3 program dedicated to assisting all Michigan schools – public and private – achieve environmental goals which include protecting the air, land, water and wildlife of our state. The initiative recognizes schools for the activities they undertake to teach pre-kindergarten through senior high school students good ecological practices and environmental stewardship. [Click here for more information.](#)



# Bay County Dashboard

## Green Initiatives



### Great Lakes Clean Water Organization

- Great Lakes Clean Water Organization now known as Great Lakes Clean Water/US Clean Water Organization is a Non-Profit Tax Exempt 501(c) 3 Corporation based in Michigan. It was created to promote the collection and disposal of unused/unwanted drugs in a safe and approved manner. This will keep harmful effects of drugs out of ground water, surface water and municipal water systems in the Great Lakes Region and throughout the US. [Click here for more information.](#)



### Beach Wellness

- This yearly event takes place at the Bay City State Recreation Area, usually during the month of June. It features a 10K and 5K run/walk, beach volleyball and a classic car show. All proceeds from the events are used for beach cleanup. [Click here for more information.](#)



### Bay County Solid Waste Management Plan

- The Natural Resources and Environmental Protection Act, 1994 PA 451, as amended (NREPA), Part 115, Solid Waste Management, and its Administrative Rules, requires that each County have a Solid Waste Management Plan Update (Plan) approved by the Michigan Department of Environmental Quality (DEQ). [Click here for more information.](#)



### Michigan Water Stewardship Program

- The Michigan Water Stewardship Program (MWSP) is a partnership of organizations that provide educational assistance to Michigan's residents to identify and reduce contamination risks to water and other natural resources. The program encourages individuals to take voluntary proactive steps to protect Michigan's water quality - our drinking water - as well as protect our other valuable natural resources while caring for our family's health. [Click here for more information.](#)