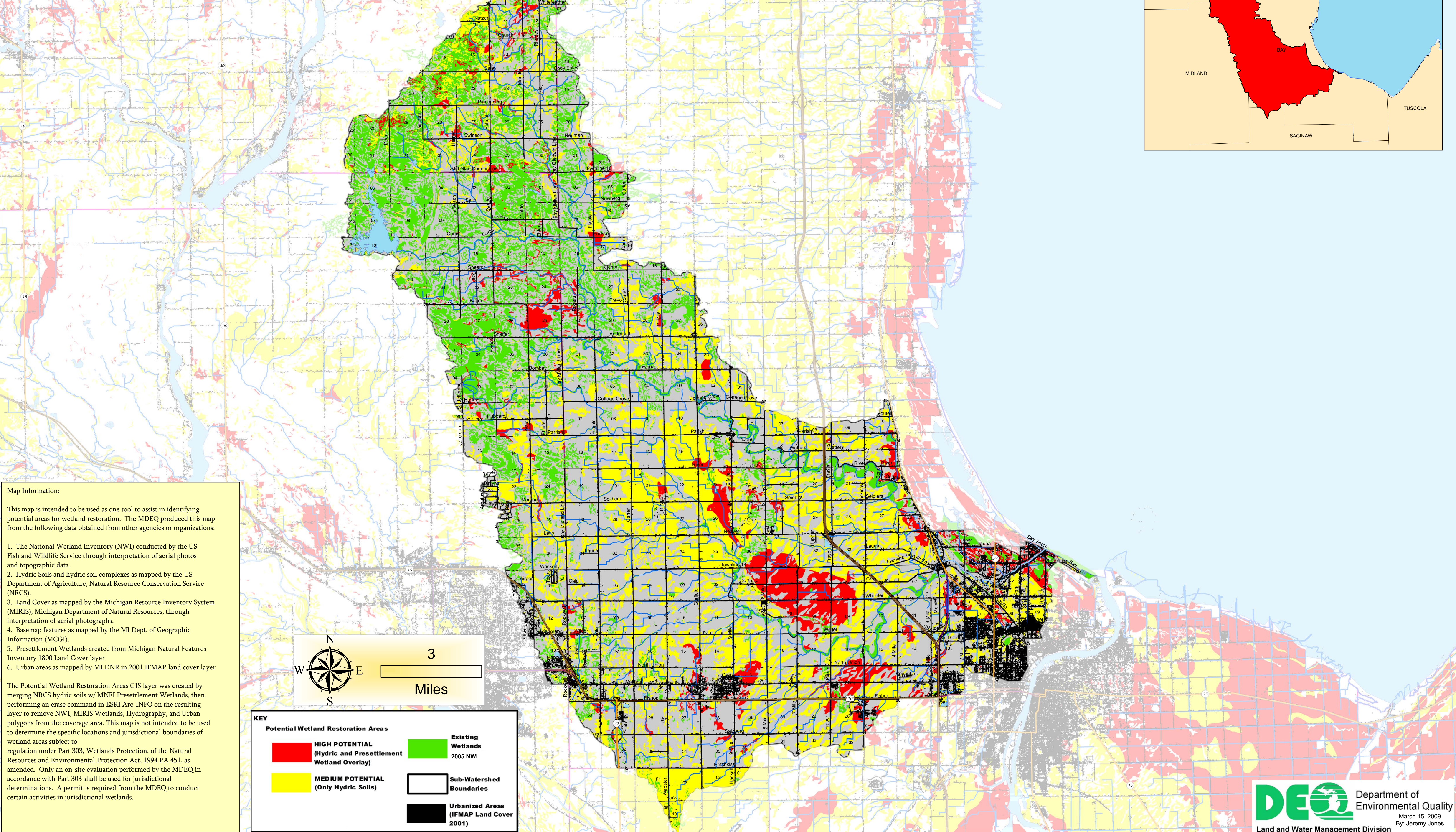
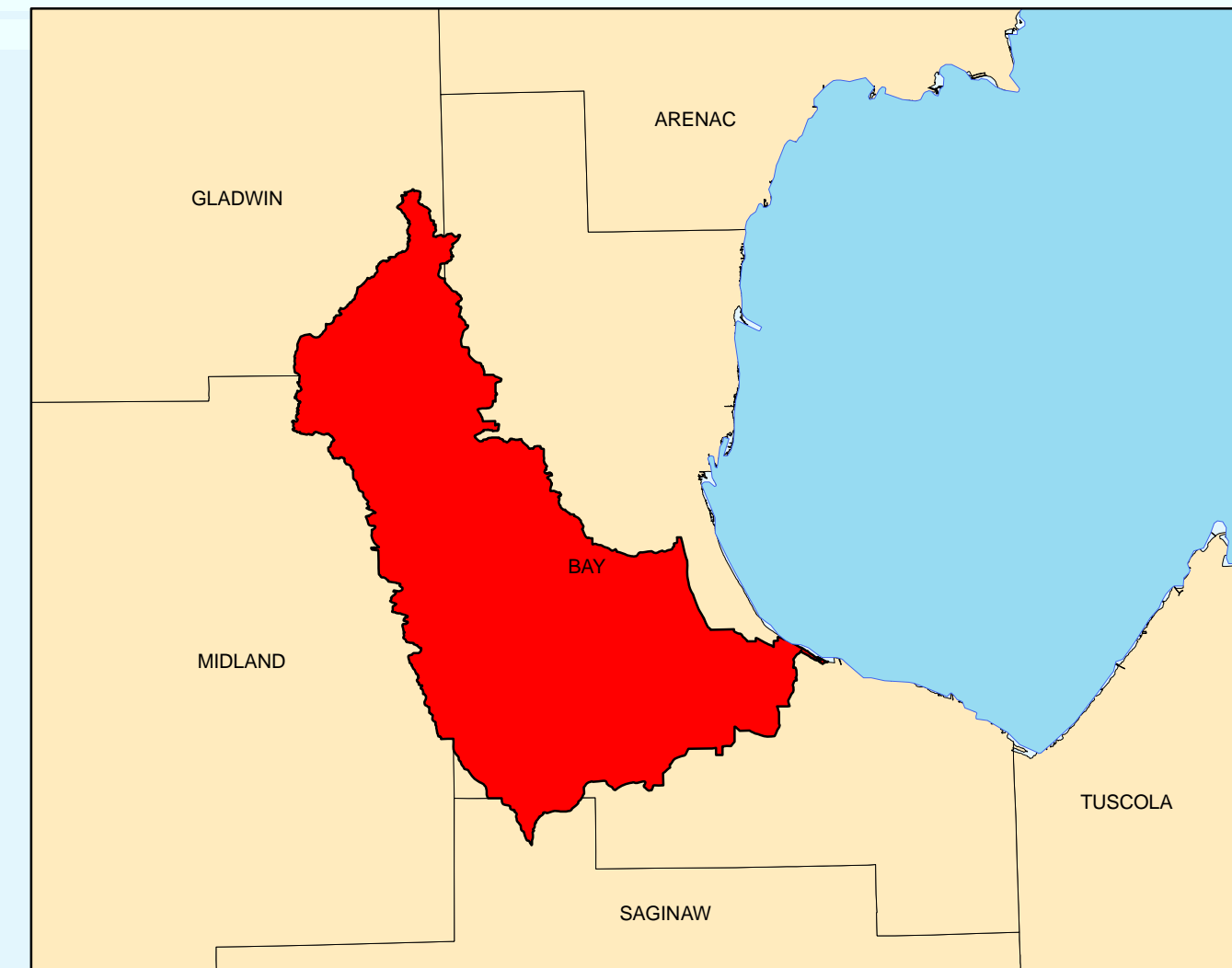


Kawkawlin River Watershed Potential Wetland Restoration Areas

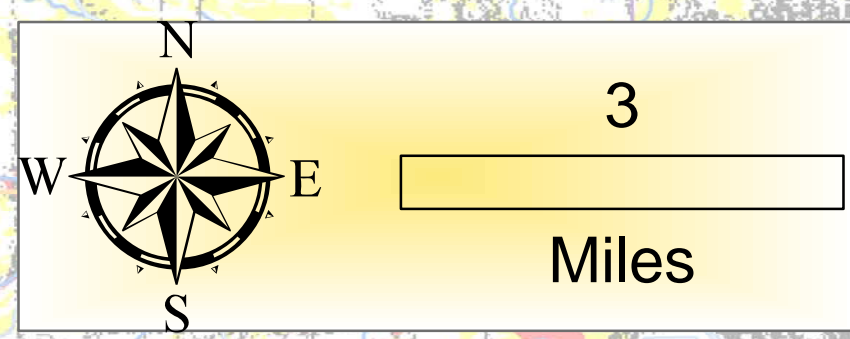


Map Information:

This map is intended to be used as one tool to assist in identifying potential areas for wetland restoration. The MDEQ produced this map from the following data obtained from other agencies or organizations:

1. The National Wetland Inventory (NWI) conducted by the US Fish and Wildlife Service through interpretation of aerial photos and topographic data.
2. Hydric Soils and hydric soil complexes as mapped by the US Department of Agriculture, Natural Resource Conservation Service (NRCS).
3. Land Cover as mapped by the Michigan Resource Inventory System (MIRIS), Michigan Department of Natural Resources, through interpretation of aerial photographs.
4. Basemap features as mapped by the MI Dept. of Geographic Information (MCGI).
5. Presettlement Wetlands created from Michigan Natural Features Inventory 1800 Land Cover layer
6. Urban areas as mapped by MI DNR in 2001 IFMAP land cover layer

The Potential Wetland Restoration Areas GIS layer was created by merging NRCS hydric soils w/ MNFI Presettlement Wetlands, then performing an erase command in ESRI Arc-INFO on the resulting layer to remove NWI, MIRIS Wetlands, Hydrography, and Urban polygons from the coverage area. This map is not intended to be used to determine the specific locations and jurisdictional boundaries of wetland areas subject to regulation under Part 303, Wetlands Protection, of the Natural Resources and Environmental Protection Act, 1994 PA 451, as amended. Only an on-site evaluation performed by the MDEQ in accordance with Part 303 shall be used for jurisdictional determinations. A permit is required from the MDEQ to conduct certain activities in jurisdictional wetlands.



KEY		Potential Wetland Restoration Areas	
	HIGH POTENTIAL (Hydric and Presettlement Wetland Overlay)		Existing Wetlands 2005 NWI
	MEDIUM POTENTIAL (Only Hydric Soils)		Sub-Watershed Boundaries
	Urbanized Areas (IFMAP Land Cover 2001)		